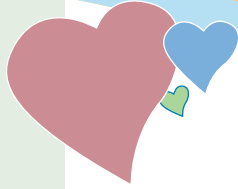


Big Hearts for Little Hearts Newsletter

BIG HEARTS FOR LITTLE HEARTS NEWSLETTER, LOMA LINDA GUILD
NOVEMBER 2020 – FEBRUARY 2021



A Note from the President

The Big Hearts for Little Hearts Loma Linda Guild continues to support the Loma Linda

University Children's Hospital and its young patients—even if we have had to work around the challenges of this past year!

Our patient diversionary events have continued, though without the usual lobby parties. Instead, the hospital's Child Life specialists distribute the event's craft packets, books, and toys to patients in their rooms.

In December we introduced **Holiday Storytime** (see article at right), which we hope to expand beyond the Christmas season; plans are underway to film and broadcast the reading of more children's books throughout the year.

A warm welcome to our newest board members, **Joyce Waner**, who will chair the 5K event at Burrage Mansion (returning spring 2022), and **Caryl Clover**, who will take over the Storytime productions. And, sadly, we must say goodbye to one of the guild's brightest lights, **Kristi Franco**, as she moves out of the area with her family.

If you haven't done so already, it's time to renew your yearly guild membership. Unfortunately, we had to cancel the membership luncheon for 2021. However, membership forms will be mailed to you shortly (you may also renew online, via our website). Your membership fees and additional donations fund the guild's patient activities and purchase much-needed hospital equipment and supplies.

Thank you for your continued support!

Blessings,

Laurie

2020-21 Board of Directors

President: Laurel Munson
Past President: Lynn Sleeth
President's Advisors: Eloise Habekost, Dixie Watkins
Secretary: OPEN
Treasurer: Penny Moores
Membership: Julie Cutler
Events: Cheryl Fallon
Special Projects: Leigh Anderson
Education Liaisons: Valerie Lewis, Lynn Sleeth
Publicist: James Ponder
Advisor: Carol Troesh
Spring & Fall Reads: Evelyn Gussek
5K Event: Joyce Waner
Cooking School: Angie Temple
Trees of Hope: Dixie Watkins, Julie Cutler
Gingerbread Village: Sandi Herrmann
Storytime Production: Caryl Clover
Guild Volunteers: Heather Burton (Social Media), Linda Brooks (Photography)
Guilds Manager: Josh Zahid

Contact Information

BHLH Loma Linda Guild
P.O. Box 964 • Loma Linda, CA 92354
(909) 558-5384 phone
bhlh@llu.edu • lluch.org/guilds

facebook.com/bhlhlomalinda
 bhlhlomalinda

Do you know someone interested in becoming a guild member? Have them **visit us online** or call **Julie: (909) 307-0940**. She'll be delighted to provide more information.

A New Christmas Tradition: Holiday Storytime



While COVID-19 made the Christmas season more challenging for all of us, the Big Hearts for Little Hearts Loma Linda Guild introduced what we hope will become a new holiday tradition to brighten the holidays for patients young and old who find themselves spending Christmas in the hospital.

In collaboration with the Loma Linda Broadcasting Network Cable TV & Media Services, who generously donated their studio sets, crew, and recording time, board member Kristi Franco led the production (with support from Leigh Anderson, Evelyn Gussek and Penny Moores) of a filmed storytime series featuring beloved holiday-themed children's books.

Local kindergarten teacher Mara Comadena read the stories with effervescent charm, even changing her outfits and stage props to breathe life into each story, which included: *The Polar Express* (Chris Van Allsburg), *The Snowy Day* (Ezra Jack Keats), *The Broken Ornament* (Tony DiTerzizzi), *Snow* (Uri Shulevitz), *Stranger in the Woods: A Photographic Fantasy* (Carl Sams), and *Olivia Helps with Christmas* (Ian Falconer). The LLBN studio sets also reflected each book's storyline, with colorful graphics projected behind Mara as she read.

Filmed in November, the storytime sessions debuted December 4, airing on patient-room televisions around the clock through January 5, 2021, and delighting "kids from 1 to 92" throughout the Loma Linda University Children's Hospital and the Loma Linda Health network.



Photos: Leigh Anderson, Penny Moores



Spring and Summer
Activities Calendar

**SPRING
ACTIVITIES
CANCELED**

Coming Soon . . .

Fantastic Fun Packs

We have an exciting fundraiser in store for the summer.

Watch for details later this spring on how you can participate!

2020 Trees of Hope

**TOTAL RAISED:
\$24,000**

2020 GUILD PURCHASES

- \$40,000** — Arctic Sun Cooling Blanket for NICU (1)
- \$25,000** — LLU Children's Hospital Foundation Gala Sponsorship
- \$6,000** — Frontal thermometers (20 units @ \$300 each) for LLU Children's Hospital COVID-19 screening
- \$4,400** — Additional contribution to Vision 2020 campaign to fund a medical/surgical room in the new children's hospital

Virtual Valentine's Day

Nearly a year into the COVID-19 pandemic, BHLH guild members (led by Lynn Sleeth and Valerie Lewis, education liaisons) refused to let the restrictions stop them from organizing and preparing, while also taking the recommended safety precautions, gift bags with plush toy animal, age-appropriate story books, coloring books and crayons, wooden toys, and special LEGO® gifts.



Photo: LLUCH Child Life

The hospital's Child Life staff hand-delivered the activity packets to nearly 150 patients receiving care on the Loma Linda University Children's Hospital units. Judging by the happy smile on this young patient's face, it's safe to say this year's "socially distant" Valentine's packets still managed to warm many little hearts.

2020 GUILD PURCHASES

- \$40,000** — Arctic Sun Cooling Blanket for NICU (1)
- \$25,000** — LLU Children's Hospital Foundation Gala Sponsorship
- \$6,000** — Frontal thermometers (20 units @ \$300 each) for LLU Children's Hospital COVID-19 screening
- \$4,400** — Additional contribution to Vision 2020 campaign to fund a medical/surgical room in the new children's hospital



We extend special thanks to **Peggy Daw** (pictured at top left, in glasses at center) and her volunteer crew of big-hearted seamstresses who have, to date, sewn more than 1,500 vibrantly patterned pillowcases (left) for LLU Children's Hospital patients (above), to help brighten the many long hours spent in bed.

Photos: Peggy Daw



Snapshots: 2020 Fall & Holiday Events



Photos: Penny Moores, Dixie Watkins, Josh Zahid

Top row: BHLH board members prepared gingerbread kits for patients to assemble in their rooms for the 2020 Gingerbread Village.
Middle row: The LEGO® LOVE window display in LLU Children's Hospital lobby; Julie Cutler and Jenni Smith in front of the 2020 Trees of Hope. **Bottom row:** Patient care packages for the 2020 Carols in the Lobby included plush toys and LEGO® activity sets.

Visit the [membership webpage](#) to join the Big Hearts for Little Hearts Loma Linda Guild or renew your membership. You'll also find info about upcoming activities where you can share your big heart!

